



AMRIT PLANNERS PVT. LTD.

C/5/107, Ansal API Sushant Golf City, Lucknow (U.P)226030
www.amritplanners.com | info@amritplanners.com

+91-9651991213



A MODERN
COMMERCIAL SPACE
with a touch of life and design

Rera Registration UPRERAPRJ760815



AMRIT PLANNERS PVT. LTD.

C/5/107, Ansal API Sushant Golf City, Lucknow (U.P)226030
www.amritplanners.com | info@amritplanners.com

+91-9651991213

ABOUT THE COMPANY

AMRIT PLANNERS PRIVATE LIMITED

About us:-

Amrit planners successfully provides a vast range of Residential and Commercial Projects Across Lucknow. At Amrit planners, we are highly focused in developing niche and urban-centric real estate properties across residential and commercial property segments. We take great pride and care in delivering exquisite designs, best in class amenities and feature-rich dwellings. Our objective is to make our Clients fall in love with the structures and the facilities that comes along with it.

We are highly passionate and committed to delivering the best experience for our buyers. With an emphasis on safety, value engineering and innovative services, Amrit planners is dedicated to providing the highest quality construction. All of our employees are committed to the core values of Leadership, Integrity, Professionalism, and Commitment, making them an important part of every project and long-term business relationship.

CORE VALUES:

Leadership

We strive to set and follow standards which translate into benchmarks for the industry. We constantly pioneer and innovate, while maintaining an unrelenting focus on creating impressive spaces within the city.

Integrity

We believe that integrity, foresight and innovative approaches are the means by which we can create an unrivalled experience for our clients and win their trust and loyalty.

Professionalism

We always employ premium building materials, giving excellent finishes and delivering the very best. Recognizing that our building provide solid foundations for families and commercial enterprises we commit to provide the greatest satisfaction and there is no compromise on this ever.

Commitment

We are committed to developing excellent urban residential and commercial spaces, with unmatched quality, timely delivery, exquisite architectural aesthetics, value engineering and long-lasting value for buyers.

OUR VISION & MISSION:

Amrit planners has a strong management team complementing each other in case of opportunities. Amrit planners mission is to build a world-class real estate development company with the highest standards of professionalism, ethics, customer service to thereby contribute and benefit from the growth of the Indian economy and to do what is Genuinely Best for our clients. We employ people who strive to Innovate and bring fresh, New Ideas to an ever-changing marketplace, Creating Loyalty in every customer we serve.

We envision a future wherein Amrit planners is a household name the world-over. A future wherein our brand symbolizes unique landmarks and superior community living of the highest standards of quality and customer delight.

KEY PLAN



Specification

COMMERCIAL BUILDING FOR AMRIT PLANNERS						
1	Structure	R.C. C framed structure with masonry/block partitions				
2	Exterior finish	As per the design and combination of clear and tinted glass/structural glazing/stone/tile/ACP/WPC/MS perforated screen/aluminum louvers/and texture paint				
RETAIL / SHOPS		FLOOR	WALL	CEILING	WINDOWS, GLAZING	OTHERS
3	Unit retail shops (G.F and F.F shops)	GVT.	Plastered surface with Acrylic enamel paint work	R.C.C ceiling	Aluminium glazing	
4	GF & F.F corridor	GVT.	Acrylic emulsion paint/granite cladding	R.C.C ceiling	Aluminium glazing	
5	Entrance lobby	Granite stone	Acrylic emulsion paint/granite cladding	Gypsum calse ceiling	Aluminium glazing	
6	Lift lobbies (G.F and F.F)	Acrylic emulsion paint/granite cladding and Granite stone		Gypsum calse ceiling	Aluminium glazing	
OFFICE FLOORS						
7	Unit office (2nd to 4th floor)	GVT.	Plastered surface with AEP work	R.C.C ceiling	Aluminium glazing	
8	Office corridors (2nd to 4th floor)	GVT.	Acrylic emulsion	Gypsum calse ceiling	Aluminium glazing	
9	Lift lobbies (2nd to 4th floor)	Granite stone	granite stone	Gypsum calse ceiling	Aluminium glazing	
SERVICES OPARTMENT						
7	Room(6th floor)	GVT.	Paint/Wallpaper/Wooden/Panelling	Gypsum calse ceiling		
8	Corridors (6th floor)	Granite stone/Carpet	Acrylic emulsion	Gypsum calse ceiling		
OTHER COMMON AREAS						
10	Common toilets/handicap toilet	GVT.		Moisture resistant false ceiling	Aluminium glazing	Granite/marble counter/CP fittings and sanitary ware
11	Staircase	Kota stone /M.S. Railing	Acrylic emulsion/enamel paint	Acrylic emulsion paint	Aluminium glazing	MS railing
12	Security	CCTV in lift lobbies, boom barriers at basement entry/fire alarm systems connected to central control room				
13	Elevators	Two main elevators from basement				
14	Electrical	All the units for shops and offices will have three phase MCB (single MCB as incomer) & rating as per UPPCL norms				
15	Firefighting	As per the conditions laid in the fire NOC				
16	Signages	Provision of signage spaces in façade for retail shops				
17	Parking	Double stack mechanical parking in the basement				

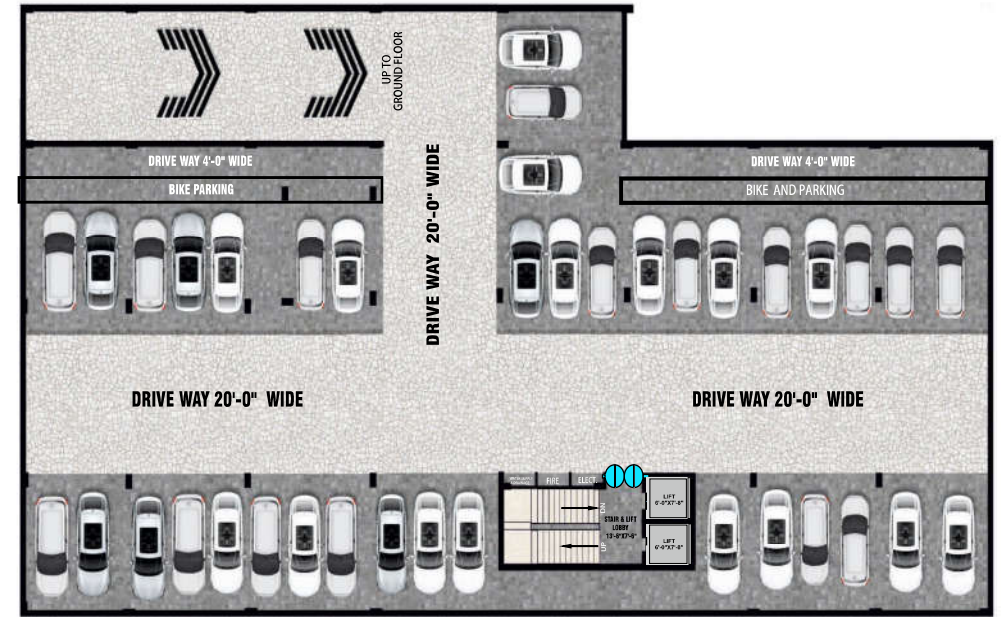
AREA STATEMENT OF GROUND FLOOR				
S.NO.	DESCRIPTION	CARPET AREA (IN SQ.FT.)	BUILTUP AREA (IN SQ.FT.)	SUPER BUILTUP AREA (IN SQ.FT.)
1	SHOP-1	370.50	380.8	533.12
2	SHOP-2	783.57	801.85	1122.59
3	SHOP-3	791.20	802.31	1123.23
4	SHOP-4	834.80	857.43	1200.40
5	SHOP-5	609.88	627.87	879.00
6	SHOP-6	297.73	310.25	434.35
7	SHOP-7	303.54	310.25	434.35
8	SHOP-8	610.35	627.87	879.00
	TOTAL	4601.57	4718.63	6606.042

AREA STATEMENT OF FIRST FLOOR				
S.NO.	DESCRIPTION	CARPET AREA (IN SQ.FT.)	BUILTUP AREA (IN SQ.FT.)	SUPER BUILTUP AREA (IN SQ.FT.)
1	SHOP-1	223.25	226.15	316.61
2	SHOP-2	151.84	159.95	223.93
3	SHOP-3	177.39	185.35	259.49
4	SHOP-4	174.70	180.19	252.27
5	SHOP-5	177.39	180.19	252.27
6	SHOP-6	279.86	289.33	405.06
7	SHOP-7	186.00	194.72	272.61
8	SHOP-8	189.34	198.16	277.42
9	SHOP-9	189.34	198.16	277.42
10	SHOP-10	189.34	198.16	277.42
11	SHOP-11	189.34	198.16	277.42
12	SHOP-12	189.34	198.16	277.42
13	SHOP-13	273.51	280.08	392.11
14	SHOP-14	266.41	272.86	382.00
15	SHOP-15	184.39	192.99	270.19
16	SHOP-16	184.39	192.99	270.19
17	SHOP-17	184.39	192.99	270.19
18	SHOP-18	184.39	192.99	270.19
19	SHOP-19	184.39	192.99	270.19
20	SHOP-20	181.16	192.99	270.19
	TOTAL	3960.14	4117.56	5764.58

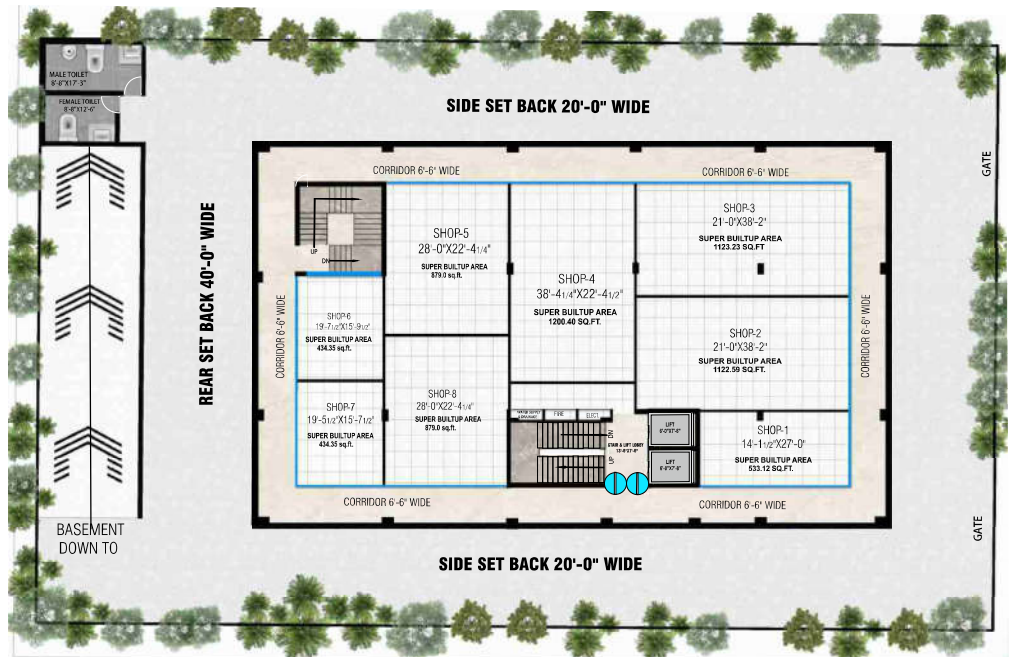
AREA STATEMENT OF TYPICAL FLOOR 2ND,3RD,4TH & 5TH FLOOR				
S.NO.	DESCRIPTION	CARPET AREA (IN SQ.FT.)	BUILTUP AREA (IN SQ.FT.)	SUPER BUILTUP AREA (IN SQ.FT.)
1	OFFICE-1	659.40	693.52	970.93
2	OFFICE-2	585.02	613.66	859.12
3	OFFICE-3	467.96	496.90	695.66
4	OFFICE-4	408.28	431.42	603.99
5	OFFICE-5	408.28	431.42	603.99
6	OFFICE-6	408.28	431.42	603.99
7	OFFICE-7	408.28	431.42	603.99
8	OFFICE-8	376.09	403.11	564.36
9	OFFICE-9	619.36	655.53	917.74
10	OFFICE-10	438.31	466.62	653.27
11	OFFICE-11	438.31	466.62	653.27
	TOTAL	5217.58	5521.64	7730.30

AREA STATEMENT OF SIXTH FLOOR				
S.NO.	DESCRIPTION	CARPET AREA (IN SQ.FT.)	BUILTUP AREA (IN SQ.FT.)	SUPER BUILTUP AREA (IN SQ.FT.)
1	ROOM-1,2	325.63	357.70	500.78
2	ROOM-3,4	325.52	352.56	493.58
3	ROOM-5	325.60	357.15	500.00
4	ROOM-6,7,8,9,10,11	329.92	355.58	497.80
5	ROOM-11	325.60	357.67	500.74
6	ROOM-12	324.00	355.00	497.00
7	ROOM-13	323.70	350.05	490.00

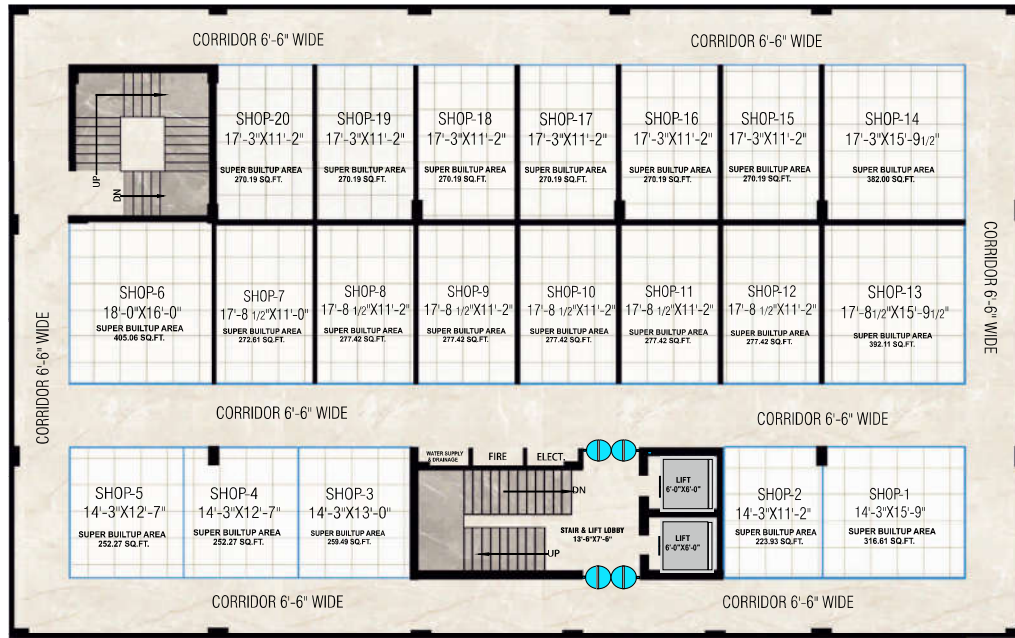
BASEMENT FLOOR PLAN



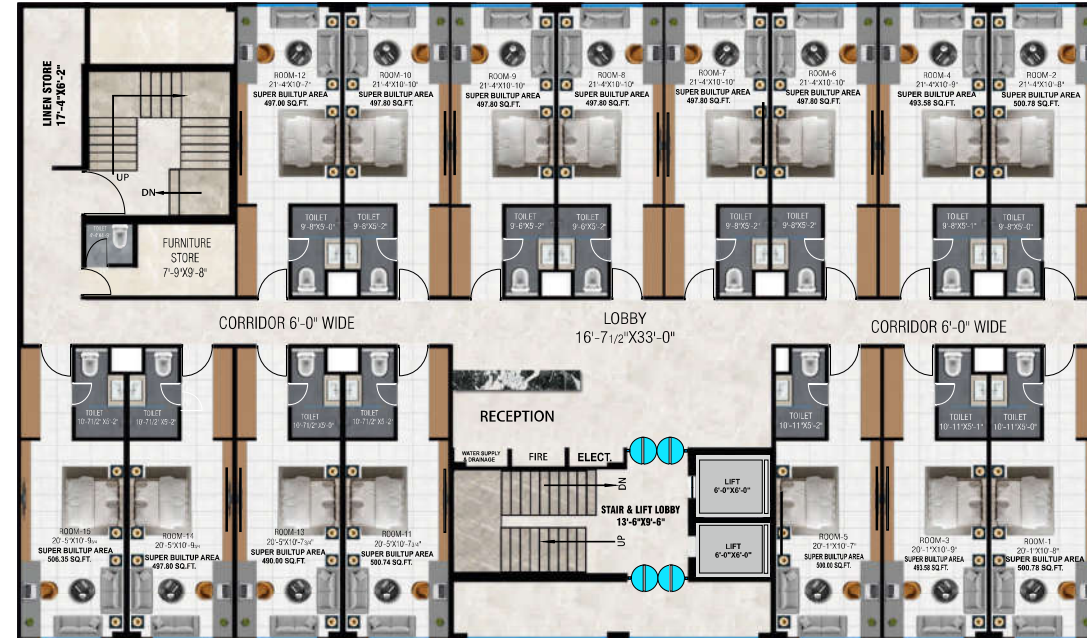
GROUND FLOOR PLAN



FIRST FLOOR PLAN



PROPOSED SIXTH FLOOR PLAN



TYPICAL FLOOR PLAN FOR SECOND, THIRD, FOURTH & PROPOSED FIFTH FLOOR



STUDIO UNIT PLAN

